

# THE CARDIFF 13

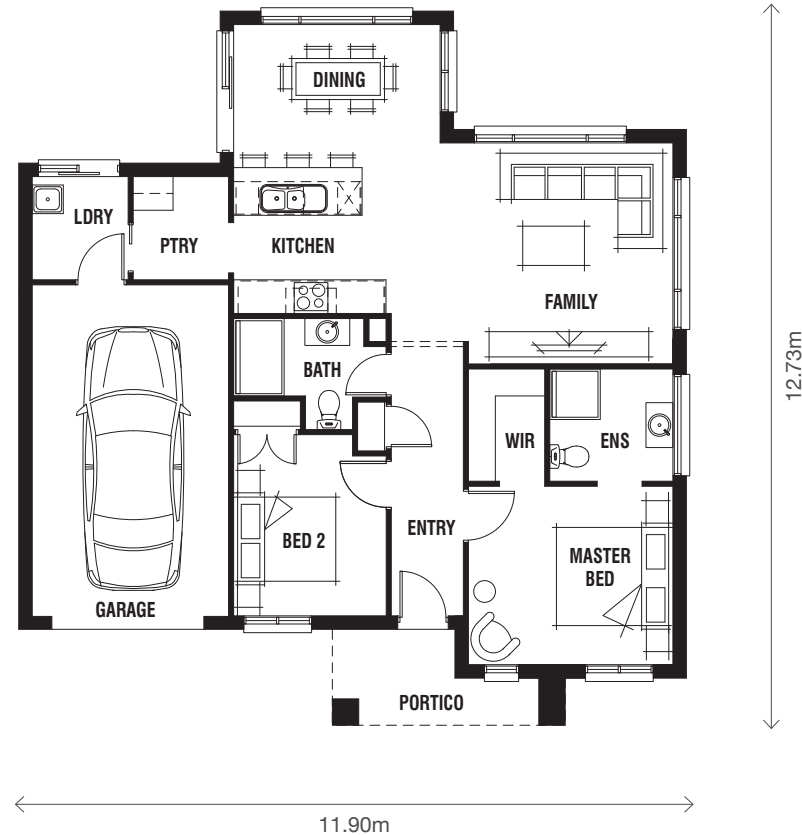
STANDARD FLOORPLAN  
with Barwon Façade

2  2  1 

13.09 squares | 121.63m<sup>2</sup>

Master Bedroom	3.6 x 3.2m	
Bedroom 2	2.7 x 2.9m	
Family	3.6 x 3.9m	
Dining	3.6 x 2.6m	

Living Area	93.28m <sup>2</sup>	10.04sq
Garage	22.96m <sup>2</sup>	2.47sq
Portico	5.39m <sup>2</sup>	0.58sq*
<b>TOTAL</b>	<b>121.63m<sup>2</sup></b>	<b>13.09sq*</b>



\*Sizes may vary slightly as per facade range. Floorplan based on the Barwon facade – see facade pricelist for RRP. This work is exclusively owned by RSS Property Holdings and cannot be reproduced or copied either wholly or in part, in any form (graphic, electronic or mechanical, including photocopying and uploading to the internet) without the written permission of RSS Property Holdings. This document is for illustration purposes and should be used as a guide only. Illustrations are not to scale. Garage dimensions are external measurements only. Refer to actual working drawings.

