

STANDARD FLOORPLAN WITH SEASIDE FAÇADE

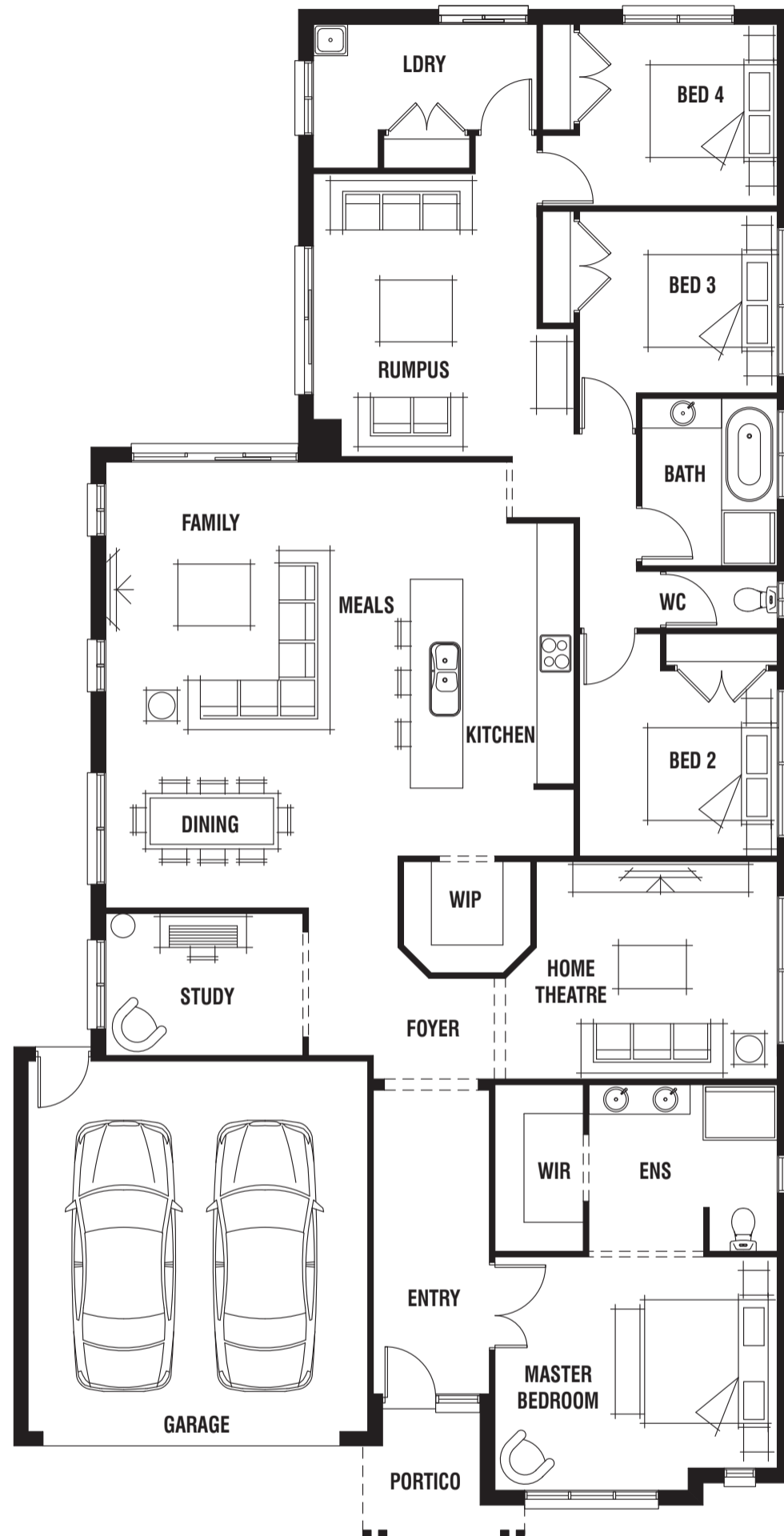
4 3 2 1 2

House (width x length): **12.60m x 24.76m**

DESIGNED TO SUIT

Land Min. Lot Width#: **14.0m+ | 45ft 11in+**

Min. Lot Depth#: **32.0m+ | 104ft 11in+**



Room Sizes

Master Bedroom	4.6 x 3.8m	Home Theatre	3.9 x 3.5m
Bedroom 2	3.2 x 3.0m	Dining	4.7 x 3.5m
Bedroom 3	3.2 x 2.9m	Family	4.9 x 3.7m
Bedroom 4	3.2 x 2.9m	Rumpus	3.6 x 4.6m
Study	3.2 x 2.3m		

Specifications

Living Area	215.51m ²	23.02sq
Garage	36.13m ²	3.89sq
Portico	4.19m ²	0.45sq*
Total	255.83m²	27.54sq*

Available Sizes

Dunedin 31
Dunedin 29
Dunedin 28

Design Options

- Alfresco Option
- Extended Family & Grand Alfresco Option
- Raked Ceiling Option
- Workshop Option
- Extended Family Option
- Feng Shui Kitchen Option
- Soaker Tub Option (to Master Ensuite)

* Sizes may vary slightly as per façade range. Floorplan based on the Seaside façade – see façade pricelist for RRP.
Minimum Lot Sizes may vary due to Council requirements & estate guidelines. This work is exclusively owned by RSS Property Holdings and cannot be reproduced or copied either wholly or in part, in any form (graphic, electronic or mechanical, including photocopying and uploading to the internet) without the written permission of RSS Property Holdings. This document is for illustration purposes and should be used as a guide only. Illustrations are not to scale. Garage dimensions are external measurements only. Refer to actual working drawings.