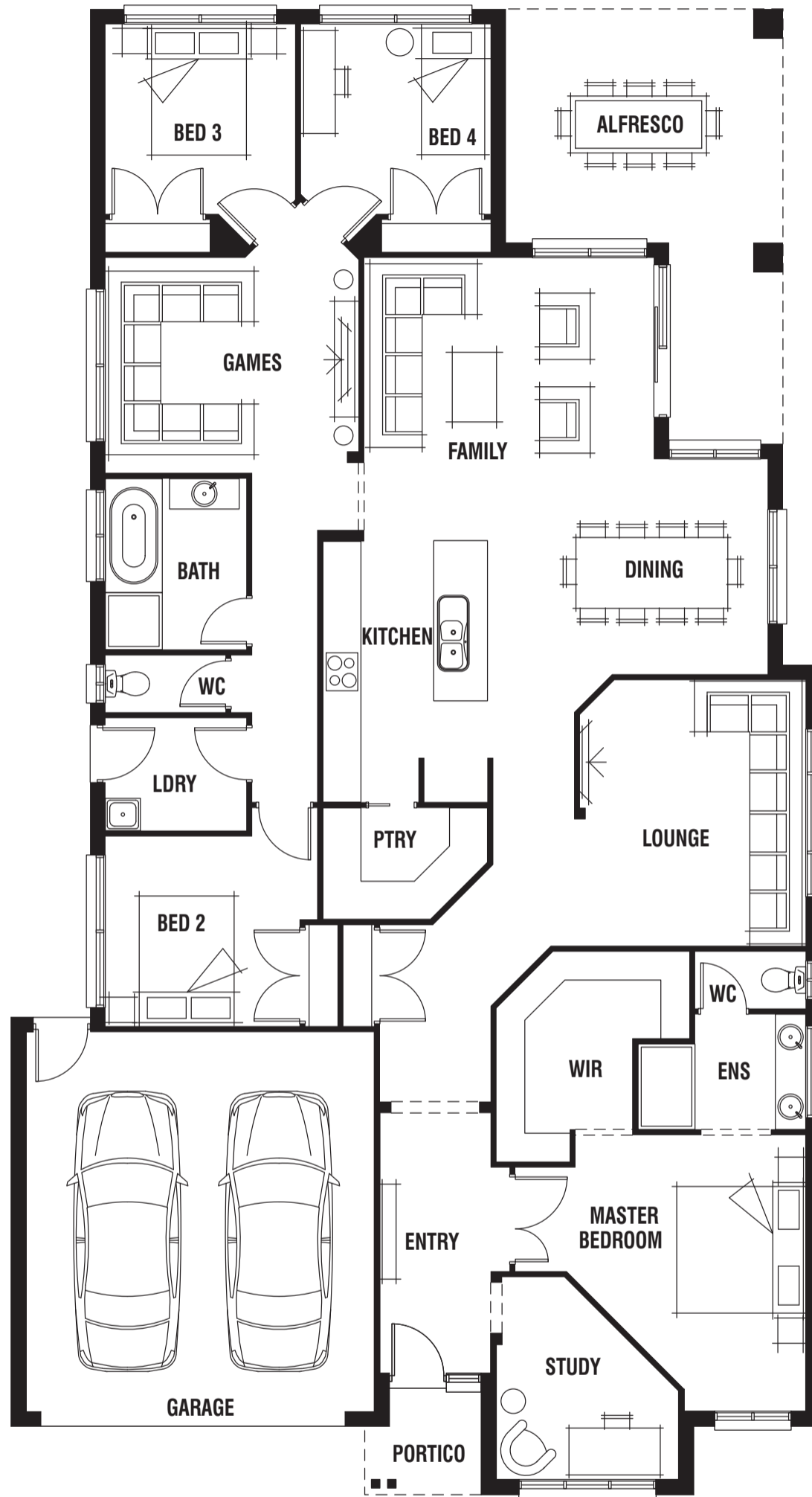


DESIGNED TO SUIT

STANDARD FLOORPLAN WITH SEASIDE FAÇADE



Room Sizes

Master Bedroom	4.4 x 4.6m	Lounge	4.6 x 3.7m
Bedroom 2	3.0 x 3.1m	Dining	3.7 x 3.8m
Bedroom 3	3.0 x 3.0m	Family	3.7 x 5.1m
Bedroom 4	3.0 x 3.0m	Games	4.0 x 4.3m
Study	3.2 x 2.9m		

Specifications

Living Area	205.14m ²	22.08sq
Garage	36.19m ²	3.89sq
Alfresco	21.89m ²	2.36sq
Portico	5.18m ²	0.56sq*
Total	268.40m²	28.89sq*

Available Sizes

Dunes 29

Design Options

- Extended Alfresco Option
- Soaker Tub Option (to Master Ensuite)

* Sizes may vary slightly as per façade range. Floorplan based on the Seaside façade – see façade pricelist for RRP.
 # Minimum Lot Sizes may vary due to Council requirements & estate guidelines. This work is exclusively owned by RSS Property Holdings and cannot be reproduced or copied either wholly or in part, in any form (graphic, electronic or mechanical, including photocopying and uploading to the internet) without the written permission of RSS Property Holdings. This document is for illustration purposes and should be used as a guide only. Illustrations are not to scale. Garage dimensions are external measurements only. Refer to actual working drawings.