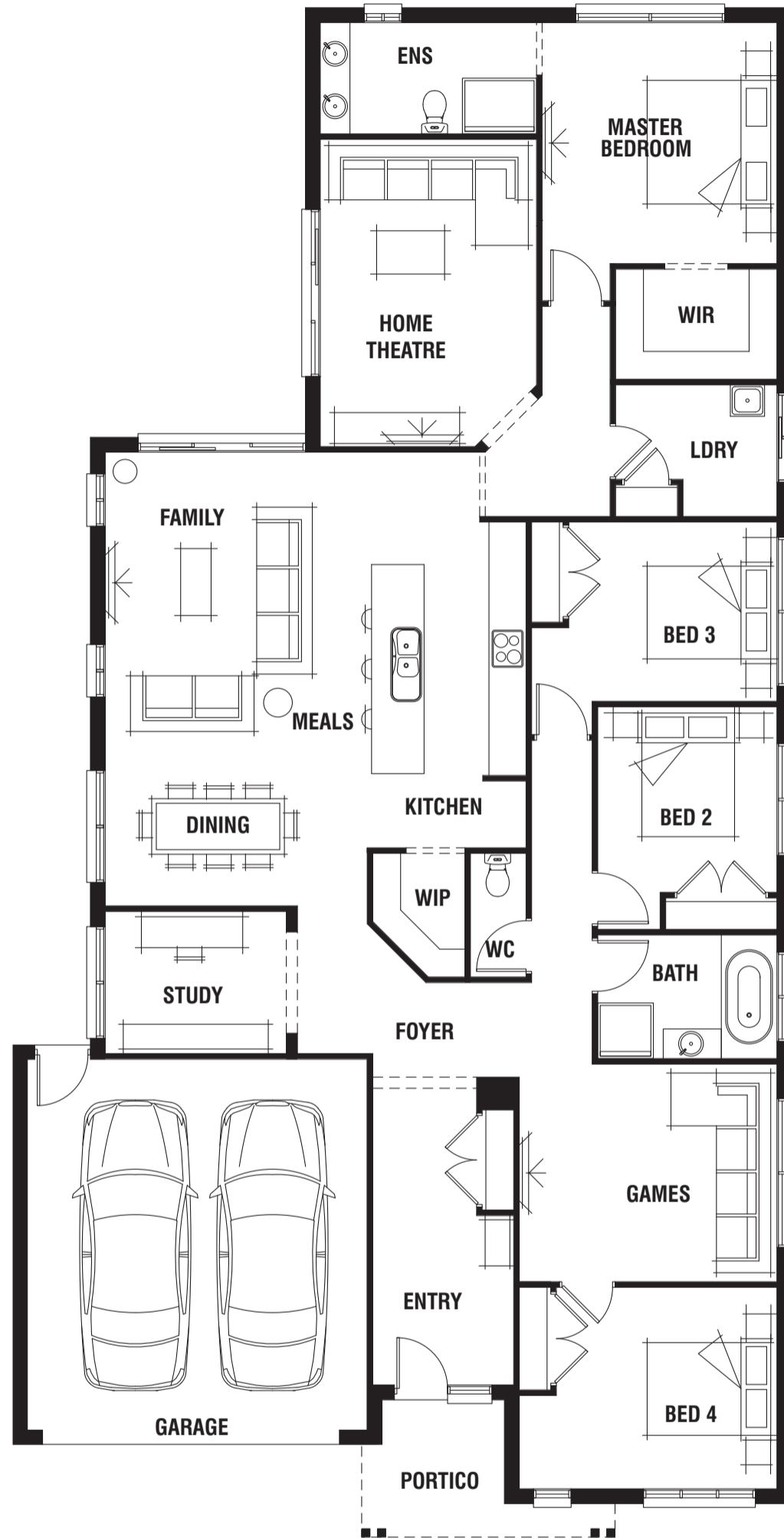


## STANDARD FLOORPLAN WITH SEASIDE FAÇADE



### Room Sizes

Master Bedroom	3.8 x 3.9m	Home Theatre	3.5 x 5.0m
Bedroom 2	2.9 x 3.0m	Games	4.2 x 3.5m
Bedroom 3	3.4 x 2.9m	Dining	3.1 x 2.6m
Bedroom 4	3.6 x 3.3m	Study	2.9 x 2.3m
Family	3.1 x 4.8m		

### Specifications

Living Area	214.54m <sup>2</sup>	23.09sq
Garage	36.16m <sup>2</sup>	3.89sq
Portico	5.86m <sup>2</sup>	0.63sq*
<b>Total</b>	<b>256.56m<sup>2</sup></b>	<b>27.62sq*</b>

### Available Sizes

Durham 31  
Durham 28

### Design Options

- Alfresco Option
- Bedroom 5 Option
- Soaker Tub Option (to Master Ensuite)

\* Sizes may vary slightly as per façade range. Floorplan based on the Seaside façade – see façade pricelist for RRP.  
# Minimum Lot Sizes may vary due to Council requirements & estate guidelines. This work is exclusively owned by RSS Property Holdings and cannot be reproduced or copied either wholly or in part, in any form (graphic, electronic or mechanical, including photocopying and uploading to the internet) without the written permission of RSS Property Holdings. This document is for illustration purposes and should be used as a guide only. Illustrations are not to scale. Garage dimensions are external measurements only. Refer to actual working drawings.