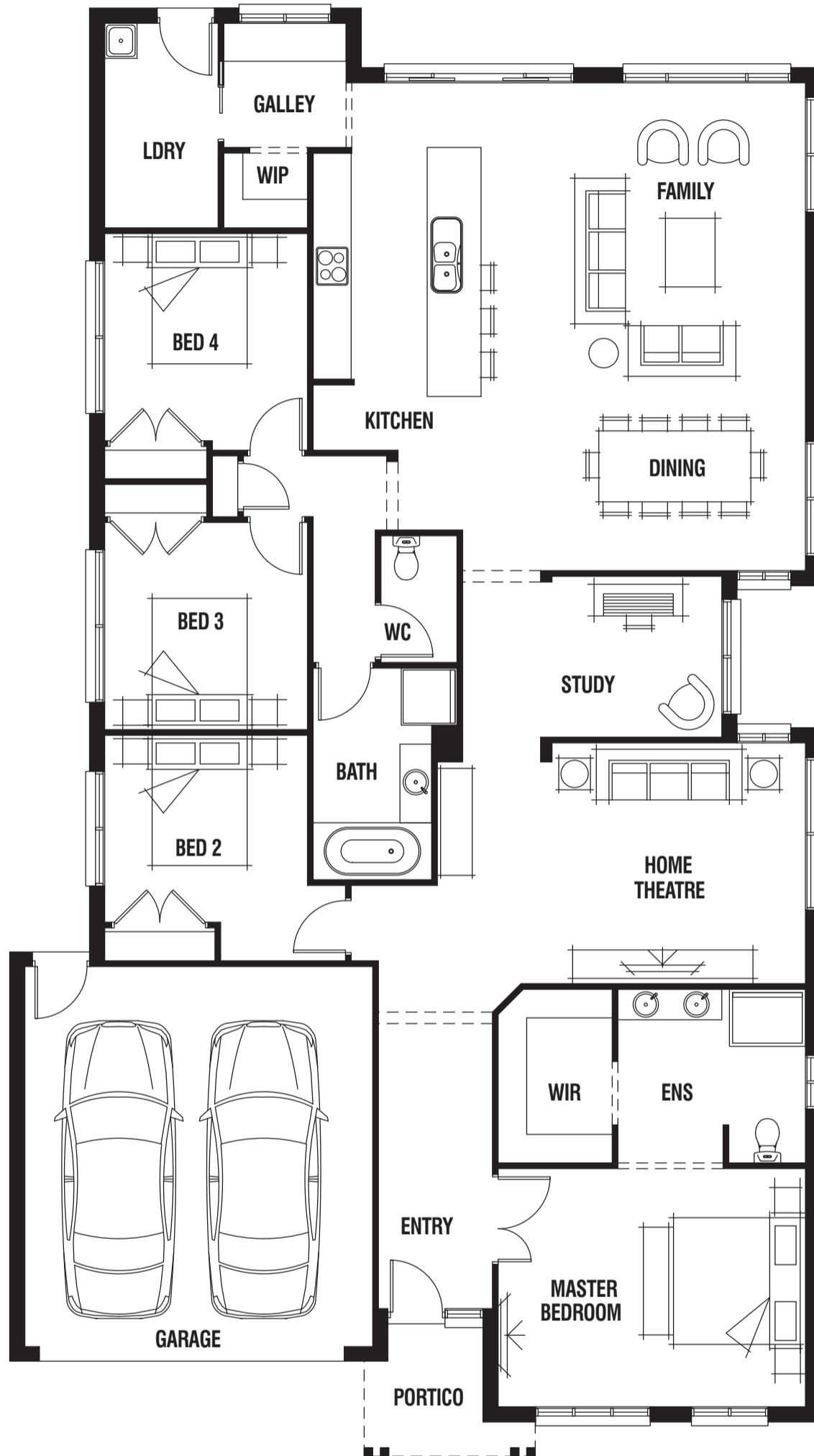


STANDARD FLOORPLAN WITH SEASIDE FAÇADE

4 2 2 1 2

House (width x length): **12.80m x 22.86m**

DESIGNED TO SUIT
 Land Min. Lot Width#: **14.0m+ | 45ft 11in+**
 Min. Lot Depth#: **32.0m+ | 104ft 11in+**



Room Sizes

Master Bedroom	4.8 x 3.8m	Study	2.9 x 2.5m
Bedroom 2	3.2 x 3.6m	Home Theatre	4.2 x 3.8m
Bedroom 3	3.2 x 3.2m	Dining	5.1 x 2.7m
Bedroom 4	3.4 x 3.2m	Family	5.1 x 4.9m

Specifications

Living Area	212.96m ²	22.92q
Garage	36.13m ²	3.89sq
Portico	4.12m ²	0.44sq*
Total	253.23m²	27.25sq*

Available Sizes

Essex 29
Essex 27

Design Options

- Alfresco Option
- Grand Alfresco Option
- Soaker Tub Option (to Master Ensuite)
- Two-Way Bathroom Option (to 2nd and 3rd Bedrooms)
- Ensuite to 2nd Bedroom Option
- Powder Room Option

* Sizes may vary slightly as per façade range. Floorplan based on the Seaside façade – see façade pricelist for RRP.
 # Minimum Lot Sizes may vary due to Council requirements & estate guidelines. This work is exclusively owned by RSS Property Holdings and cannot be reproduced or copied either wholly or in part, in any form (graphic, electronic or mechanical, including photocopying and uploading to the internet) without the written permission of RSS Property Holdings. This document is for illustration purposes and should be used as a guide only. Illustrations are not to scale. Garage dimensions are external measurements only. Refer to actual working drawings.