

# THE GRANADA 23

## STANDARD FLOORPLAN WITH FENTON FAÇADE

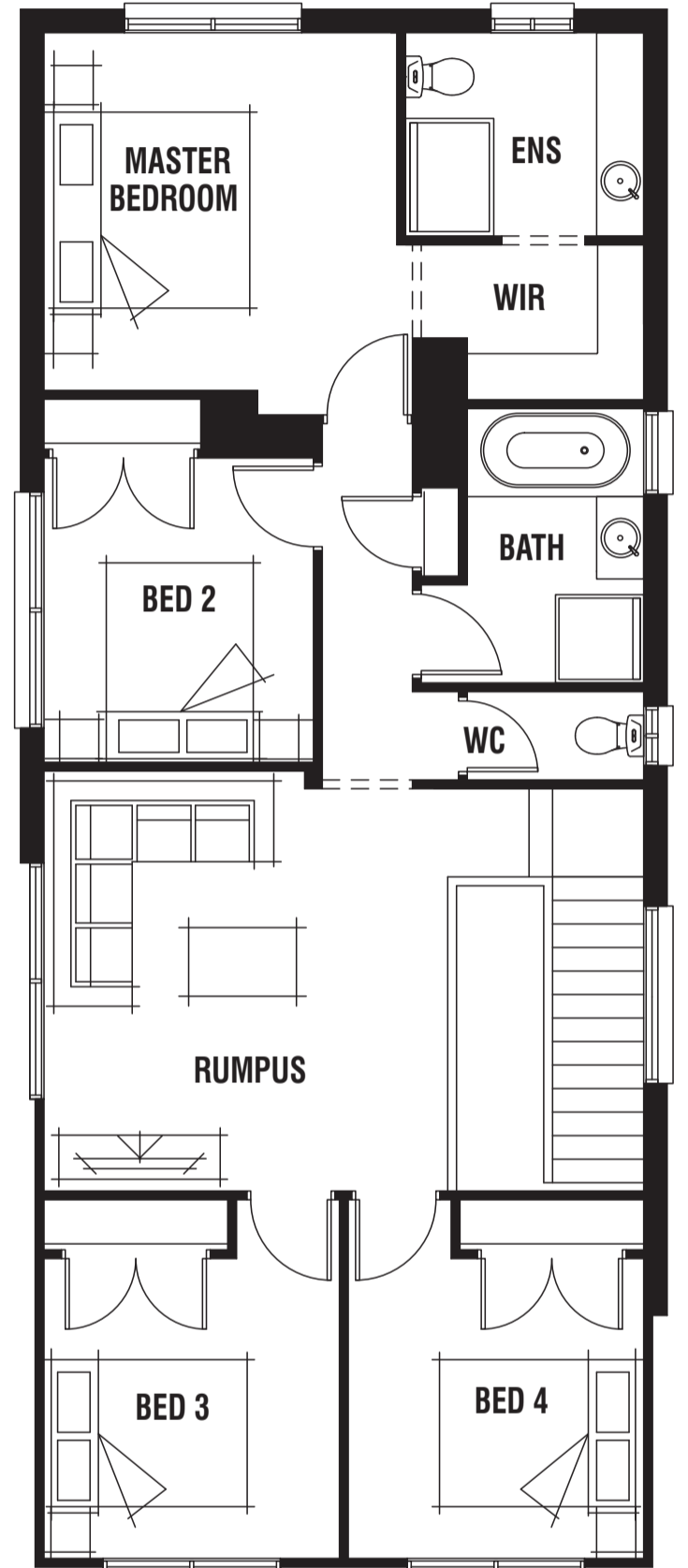
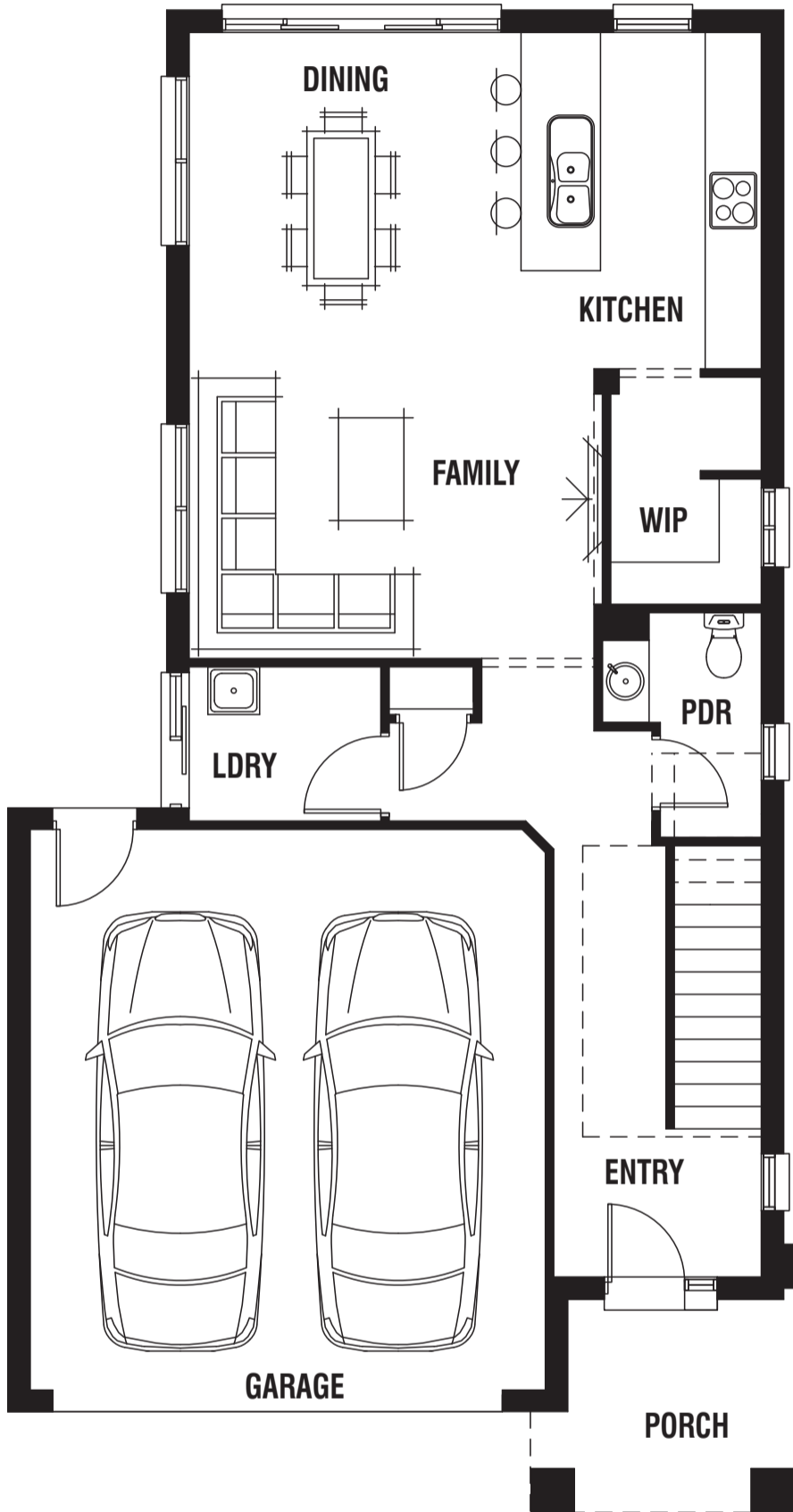
4 2 2 1 2

House (width x length): **8.3m** × **16.08m**

DESIGNED TO SUIT

Land Min. Lot Width#: **10.0m+** | **32ft 9in+**

Min. Lot Depth#: **25.0m+** | **82ft+**



### Room Sizes

Master Bedroom	3.6 x 3.7m	Family	4.3x 4.1m
Bedroom 2	2.8 x 3.1m	Dining	3.6 x 2.5m
Bedroom 3	3.0 x 3.1m	Rumpus	2.8 x 4.3m
Bedroom 4	3.0 x 3.1m		

### Specifications

Living Area	174.22m <sup>2</sup>	18.75sq
Garage	36.53m <sup>2</sup>	3.93sq
Porch	5.99m <sup>2</sup>	0.64sq*
<b>Total</b>	<b>216.74m<sup>2</sup></b>	<b>23.33sq*</b>

### Available Sizes

Granada 23	Granada 24
------------	------------

### Design Options

- Alfresco Option
- Terrace Option

\* Sizes may vary slightly as per façade range. Floorplan based on the Fenton façade – see façade pricelist for RRP. # Minimum Lot Sizes may vary due to Council requirements & estate guidelines. This work is exclusively owned by RSS Property Holdings and cannot be reproduced or copied either wholly or in part, in any form (graphic, electronic or mechanical, including photocopying and uploading to the internet) without the written permission of RSS Property Holdings. This document is for illustration purposes and should be used as a guide only. Illustrations are not to scale. Garage dimensions are external measurements only. Refer to actual working drawings.

PORTER DAVIS

ACCESS

www.porterdavis.com.au