

THE LAMONT 19

STANDARD FLOORPLAN WITH MAYA FAÇADE

3 2 2 1 2

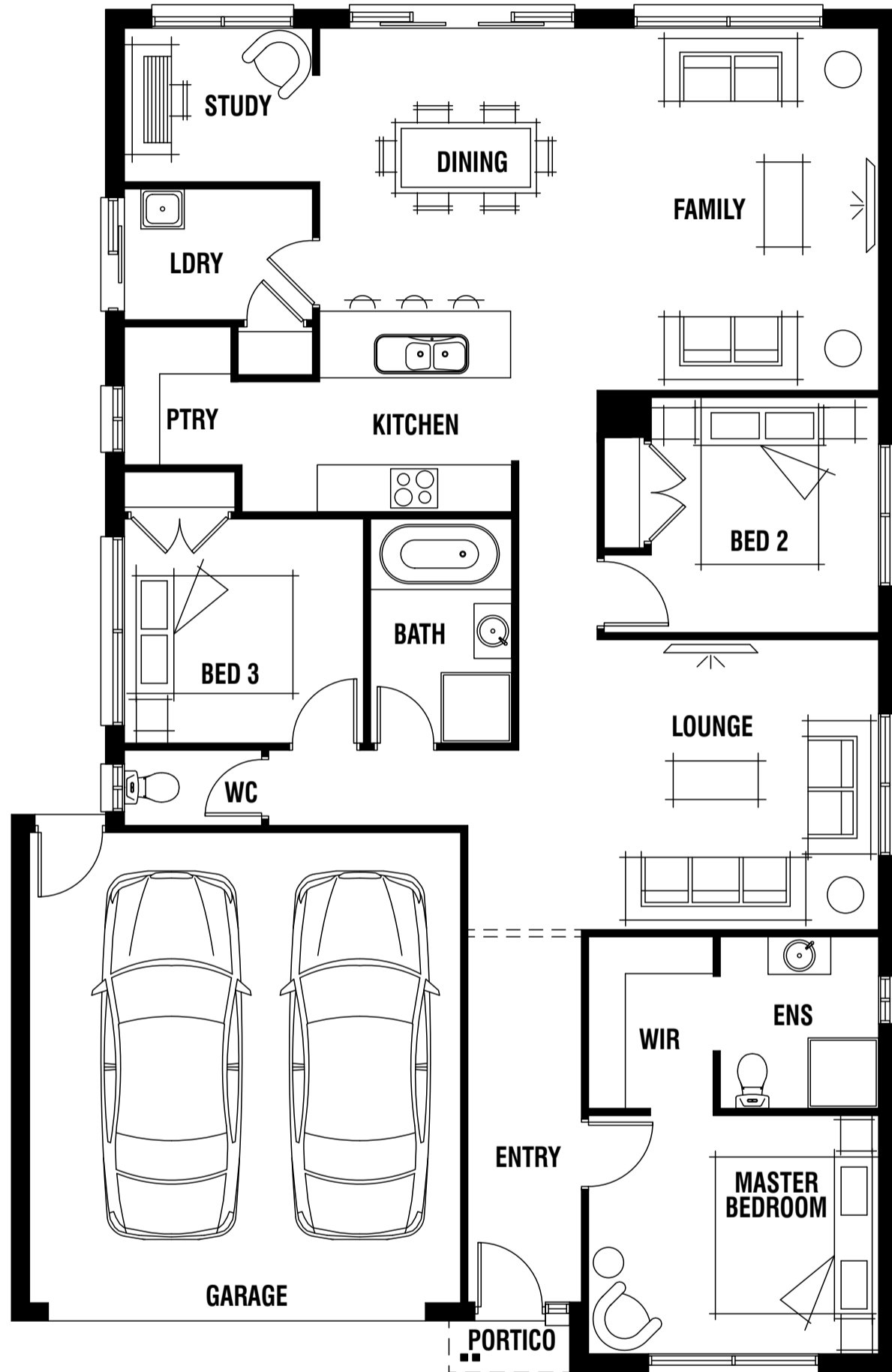
House (width x length): **11.3m** x **17.39m**

DESIGNED TO SUIT

Land Min. Lot Width#: **12.5m+** | **41ft+**

Min. Lot Depth#: **25.0m+** | **82ft+**

STRICTLY LIMITED SITE STARTS



Room Sizes

Master Bedroom	3.7 x 3.0m	Dining	3.5 x 3.6m
Bedroom 2	3.0 x 2.9m	Lounge	3.6 x 3.7m
Bedroom 3	3.0 x 2.9m	Study	2.4 x 2.0m
Family	3.6 x 4.6m		

Specifications

Living Area	143.51m ²	15.45sq
Garage	35.97m ²	3.87sq
Portico	1.02m ²	0.11sq*
Total	180.50m²	19.43sq*

Available Sizes

Lamont 19
Lamont 20
Lamont 22

Design Options

- Alfresco Option
- Bed 4 Option
- Ensuite Option
- Grand Alfresco Option
- Grand Alfresco & Family Option
- Full Width Grand Alfresco Option
- Front Lounge Option

* Sizes may vary slightly as per façade range. Floorplan based on the Maya façade – see façade pricelist for RRP.
Minimum Lot Sizes may vary due to Council requirements & estate guidelines. This work is exclusively owned by RSS Property Holdings and cannot be reproduced or copied either wholly or in part, in any form (graphic, electronic or mechanical, including photocopying and uploading to the internet) without the written permission of RSS Property Holdings. This document is for illustration purposes and should be used as a guide only. Illustrations are not to scale. Garage dimensions are external measurements only. Refer to actual working drawings.

PORTER DAVIS

ADVANTAGE

www.porterdavis.com.au