

THE LONDON 21

STANDARD FLOORPLAN WITH RIVIERA FAÇADE

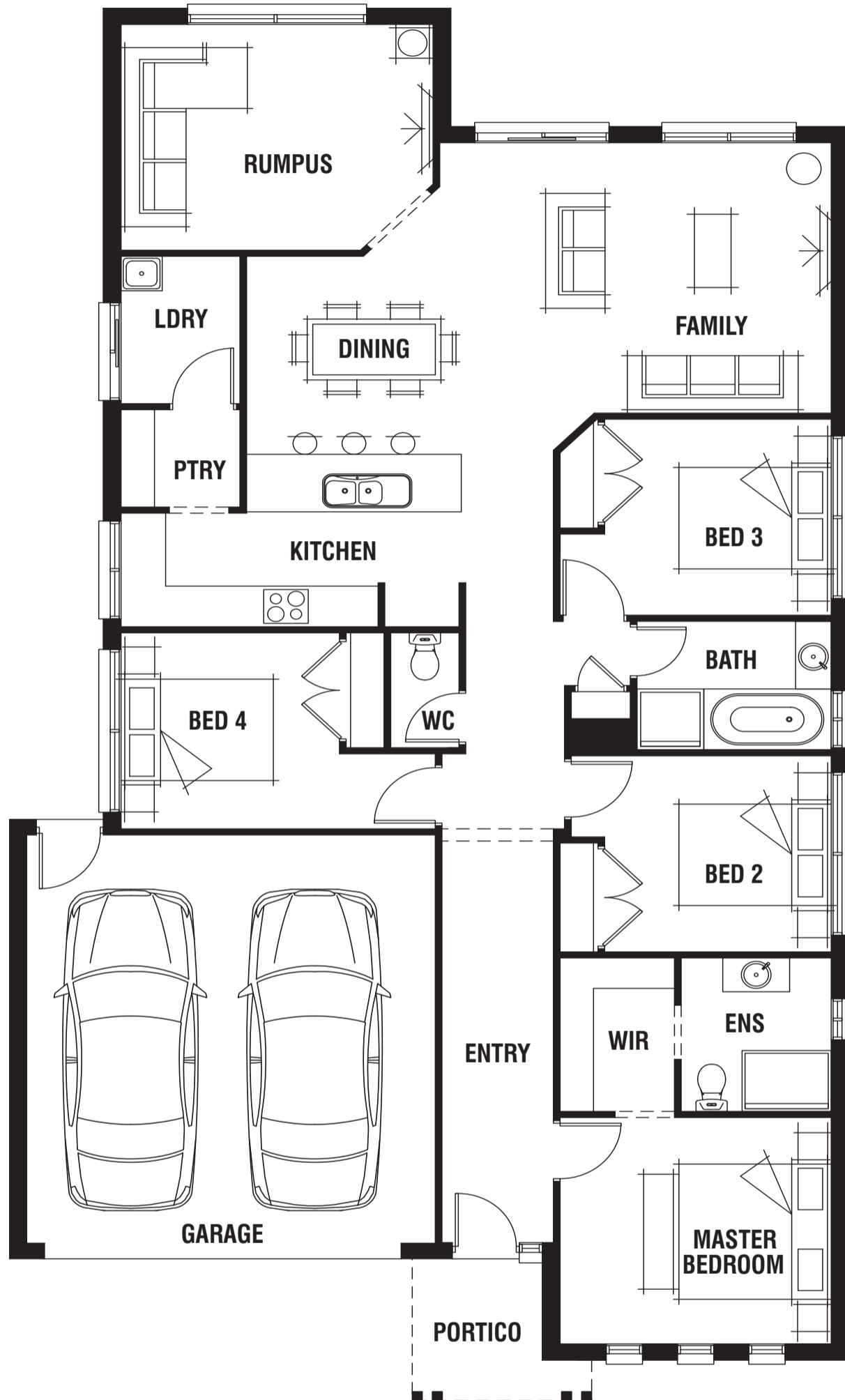
4 2 2 2

House (width x length): **11.3m** x **20.6m**

DESIGNED TO SUIT

Land Min. Lot Width#: **12.5m+** | **41ft+**

Min. Lot Depth#: **28.0m+** | **98ft 10in+**



Room Sizes

Master Bedroom	3.7 x 3.4m	Family	5.3 x 4.0m
Bedroom 2	3.1 x 2.9m	Dining	2.6 x 2.9m
Bedroom 3	3.1 x 2.9m	Rumpus	4.2 x 3.3m
Bedroom 4	2.9 x 2.9m		

Specifications

Living Area	154.53m ²	16.63sq
Garage	36.22m ²	3.90sq
Portico	4.07m ²	0.44sq*
Total	194.82m²	20.97sq*

Available Sizes

London 21
London 22
London 24

Design Options

- Alfresco Option
- Grand Rumpus Option
- Grand Rumpus & Alfresco Option

* Sizes may vary slightly as per façade range. Floorplan based on the Riviera façade – see façade pricelist for RRP. # Minimum Lot Sizes may vary due to Council requirements & estate guidelines. This work is exclusively owned by RSS Property Holdings and cannot be reproduced or copied either wholly or in part, in any form (graphic, electronic or mechanical, including photocopying and uploading to the internet) without the written permission of RSS Property Holdings. This document is for illustration purposes and should be used as a guide only. Illustrations are not to scale. Garage dimensions are external measurements only. Refer to actual working drawings.

PORTER DAVIS

ACCESS

www.porterdavis.com.au