

# THE Montreal 14

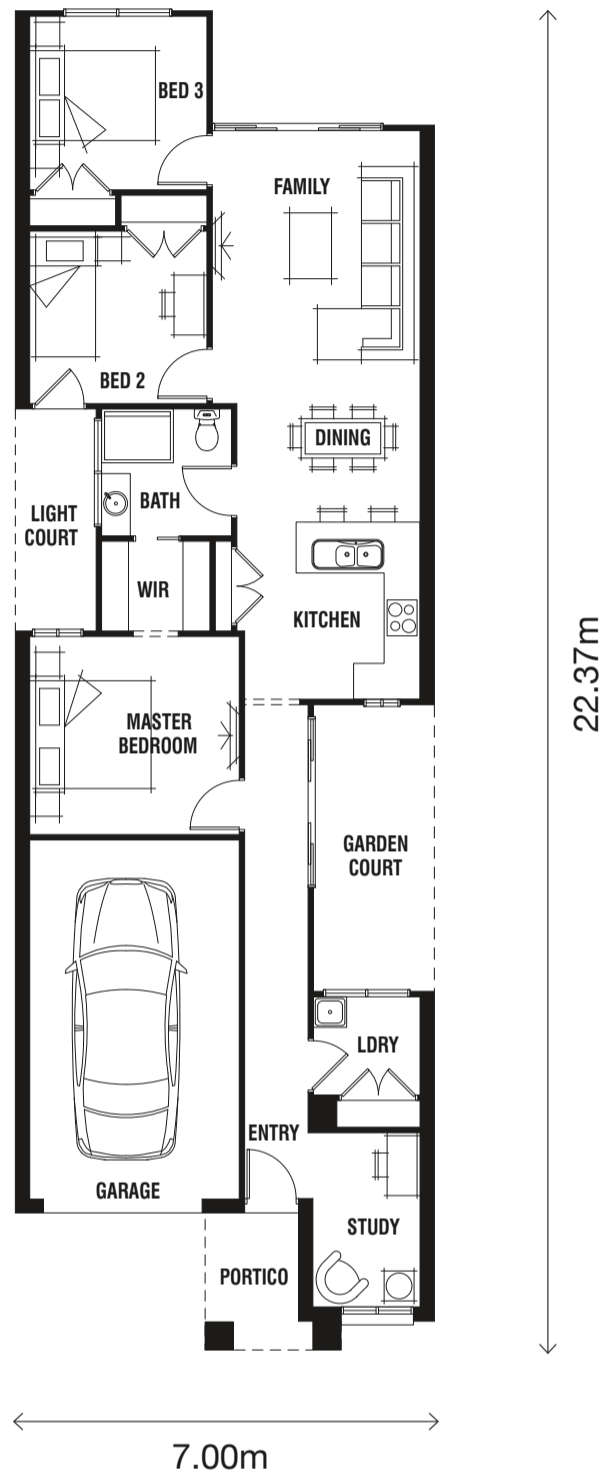
STANDARD FLOORPLAN WITH ORMOND FAÇADE

7.0m+

LOT WIDTH

28.0m+

LOT DEPTH



- 3
- 1
- 1
- 1
- 1

Master Bedroom	3.5 x 3.3m
Bedroom 2	3.0 x 2.9m
Bedroom 3	3.0 x 3.0m
Family	3.5 x 3.9m
Study	1.8 x 2.9m
Dining	3.1 x 2.7m

## AVAILABLE SIZES

MONTREAL 14

Living Area	99.60m <sup>2</sup>	10.72sq
Garage	23.30m <sup>2</sup>	2.51sq
Portico	3.91m <sup>2</sup>	0.42sq*
<b>TOTAL</b>	<b>126.81m<sup>2</sup></b>	<b>13.65sq*</b>
Garden Court	9.68m <sup>2</sup>	1.04sq
Light Court	5.01m <sup>2</sup>	0.54sq

\* Sizes may vary slightly as per facade range. Floorplan based on the Ormond facade – see facade pricelist for RRP. Minimum Lot Sizes may vary due to Council requirements & estate guidelines. This work is exclusively owned by RSS Property Holdings and cannot be reproduced or copied either wholly or in part, in any form (graphic, electronic or mechanical, including photocopying and uploading to the internet) without the written permission of RSS Property Holdings. This document is for illustration purposes and should be used as a guide only. Illustrations are not to scale. Garage dimensions are external measurements only. Refer to actual working drawings.



www.porterdavis.com.au