

# THE Munich 21

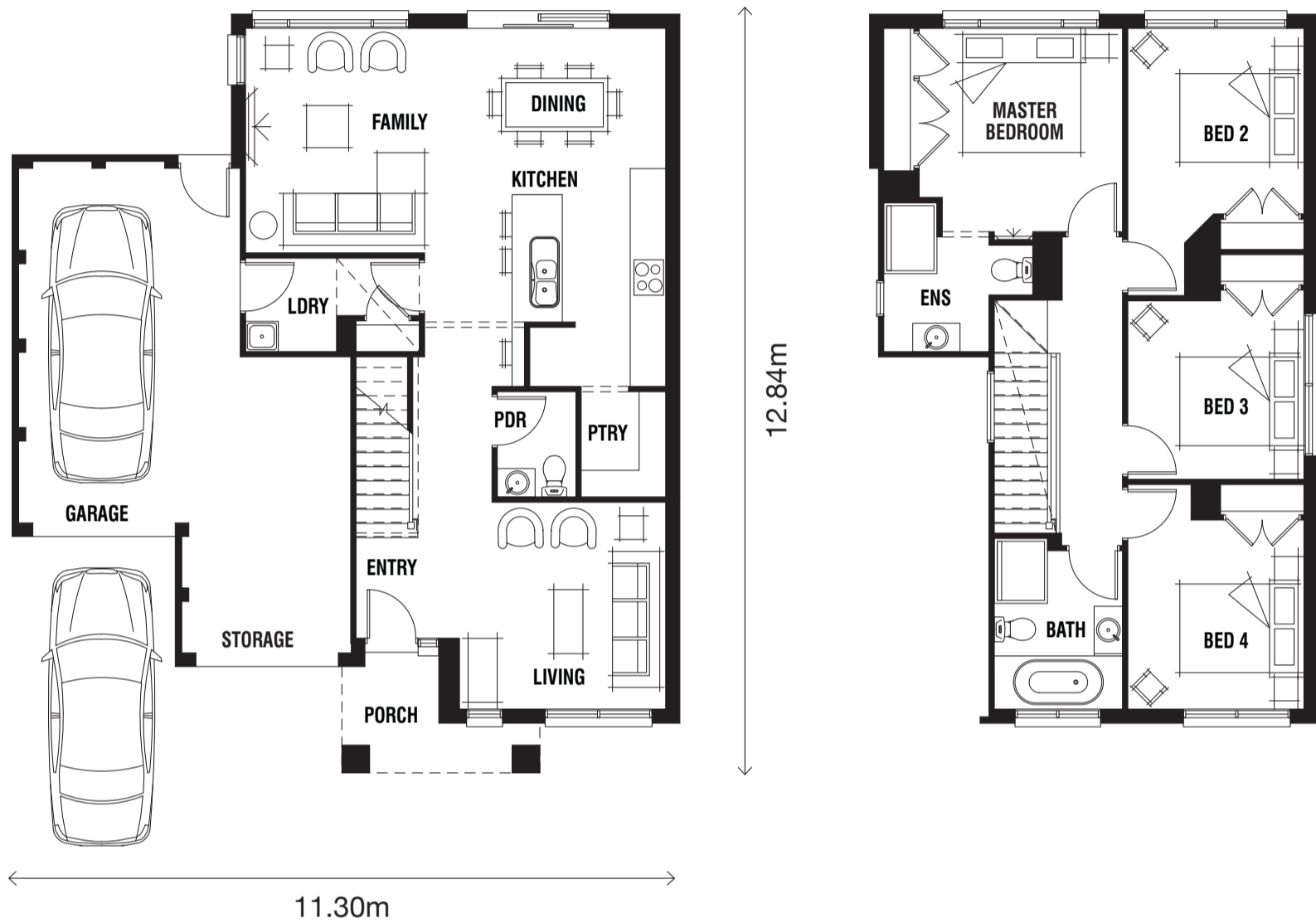
STANDARD FLOORPLAN WITH FENTON FAÇADE

12.5m+

LOT WIDTH#

18.0m+

LOT DEPTH#



|                |            |
|----------------|------------|
| Master Bedroom | 3.4 x 3.4m |
| Bedroom 2      | 3.0 x 3.1m |
| Bedroom 3      | 3.0 x 3.0m |
| Bedroom 4      | 3.0 x 3.2m |
| Living         | 3.5 x 3.5m |
| Family         | 4.5 x 3.8m |
| Dining         | 2.6 x 2.8m |

|              |                            |                 |
|--------------|----------------------------|-----------------|
| Living Area  | 154.37m <sup>2</sup>       | 16.61sq         |
| Garage       | 37.18m <sup>2</sup>        | 4.00sq          |
| Portico      | 4.69m <sup>2</sup>         | 0.50sq*         |
| <b>TOTAL</b> | <b>196.24m<sup>2</sup></b> | <b>21.12sq*</b> |

## DESIGN OPTIONS

LOWER MASTER SUITE OPTION

## AVAILABLE SIZES

MUNICH 21  
MUNICH 22



www.porterdavis.com.au

\* Sizes may vary slightly as per façade range. Floorplan based on the Fenton façade – see façade pricelist for RRP. # Minimum Lot Sizes may vary due to Council requirements & estate guidelines. This work is exclusively owned by RSS Property Holdings and cannot be reproduced or copied either wholly or in part, in any form (graphic, electronic or mechanical, including photocopying and uploading to the internet) without the written permission of RSS Property Holdings. This document is for illustration purposes and should be used as a guide only. Illustrations are not to scale. Garage dimensions are external measurements only. Refer to actual working drawings.