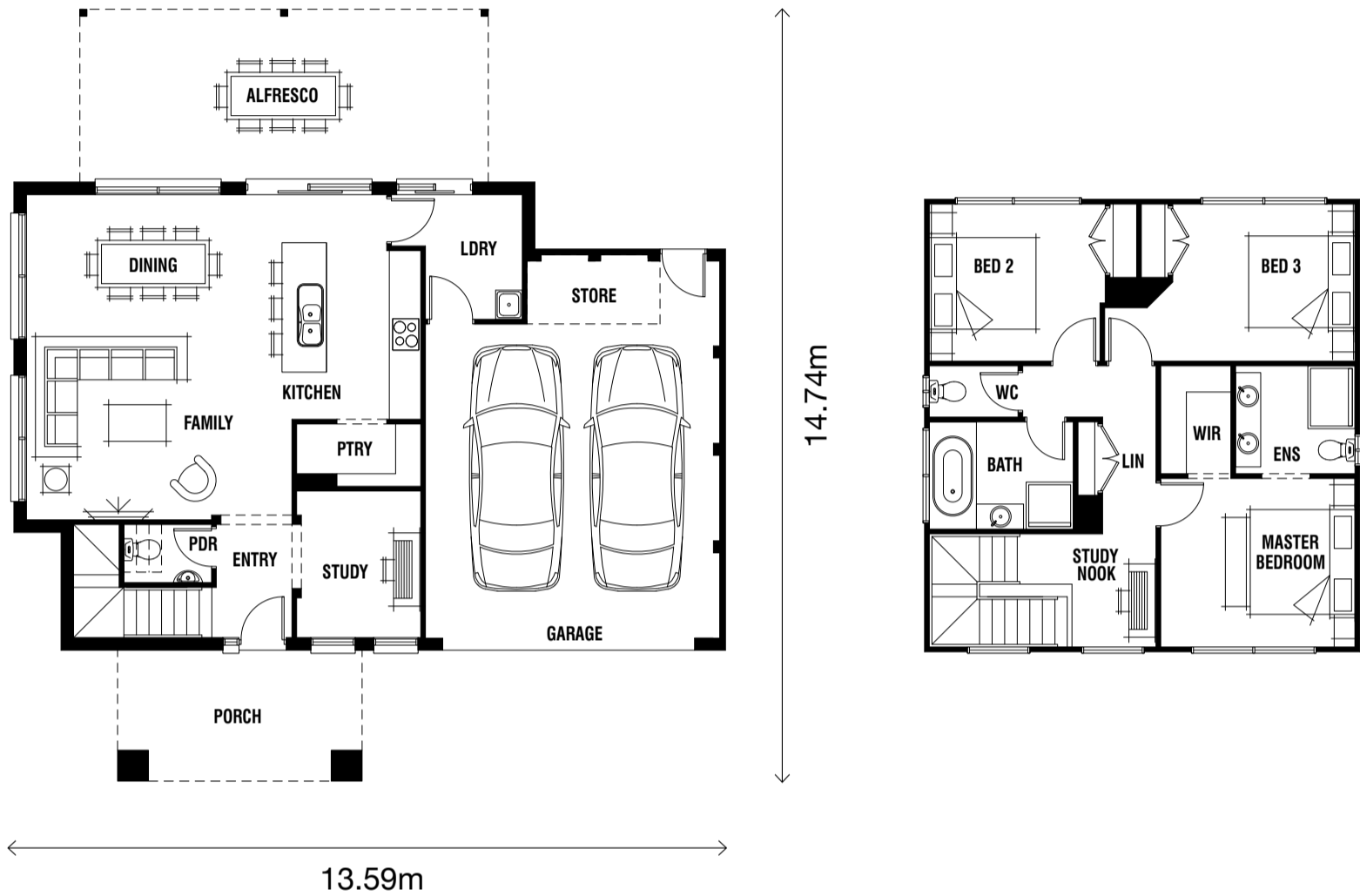


Westin 24

STANDARD FLOORPLAN WITH CONTEMPORARY FAÇADE

- 4 
- 1 
- 2 
- 1 
- 1 
- 2 



Master Bedroom	3.7 x 3.2m
Bedroom 2	3.3 x 3.0m
Bedroom 3	3.5 x 3.0m
Study	2.4 x 2.8m
Family	5.1 x 3.5m
Dining	4.9 x 2.7m

AVAILABLE SIZES

WESTIN 24

Living Area	145.53m ²	15.67sq
Garage	41.08m ²	4.42sq
Alfresco	25.74m ²	2.77sq
Porch	11.67m ²	1.26sq*
TOTAL	224.02m²	24.16sq*

* Sizes may vary slightly as per façade range. Floorplan based on the Contemporary façade – see façade pricelist for RRP. Floorplans subject to Town Planning approval. This work is exclusively owned by RSS Property Holdings and cannot be reproduced or copied either wholly or in part, in any form (graphic, electronic or mechanical, including photocopying and uploading to the internet) without the written permission of RSS Property Holdings. This document is for illustration purposes and should be used as a guide only. Illustrations are not to scale. Garage dimensions are external measurements only. Refer to actual working drawings.