

# THE CHARLTON 28

## STANDARD FLOORPLAN WITH CHALLOCK FAÇADE

4 3 2 1 1 2

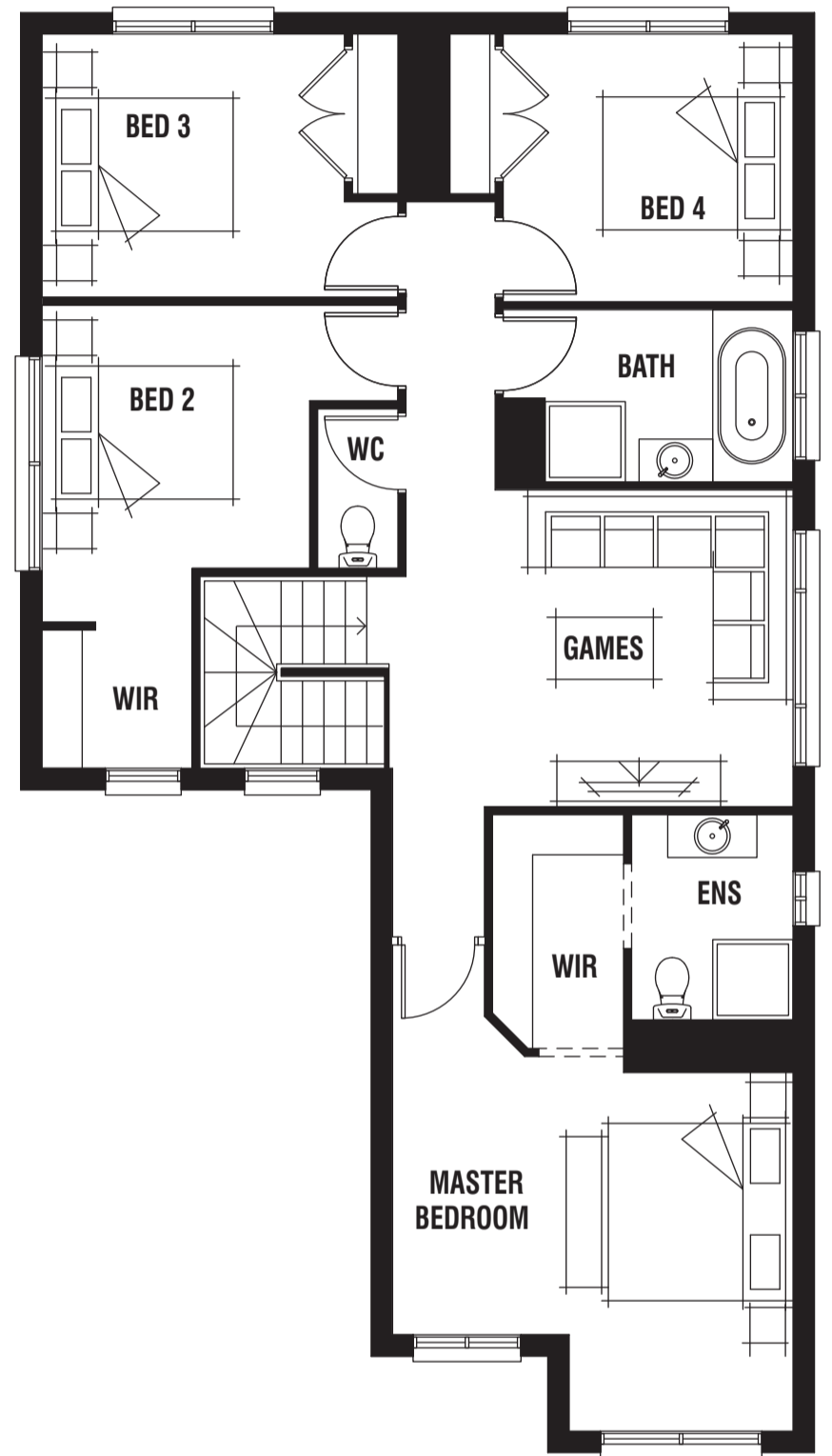
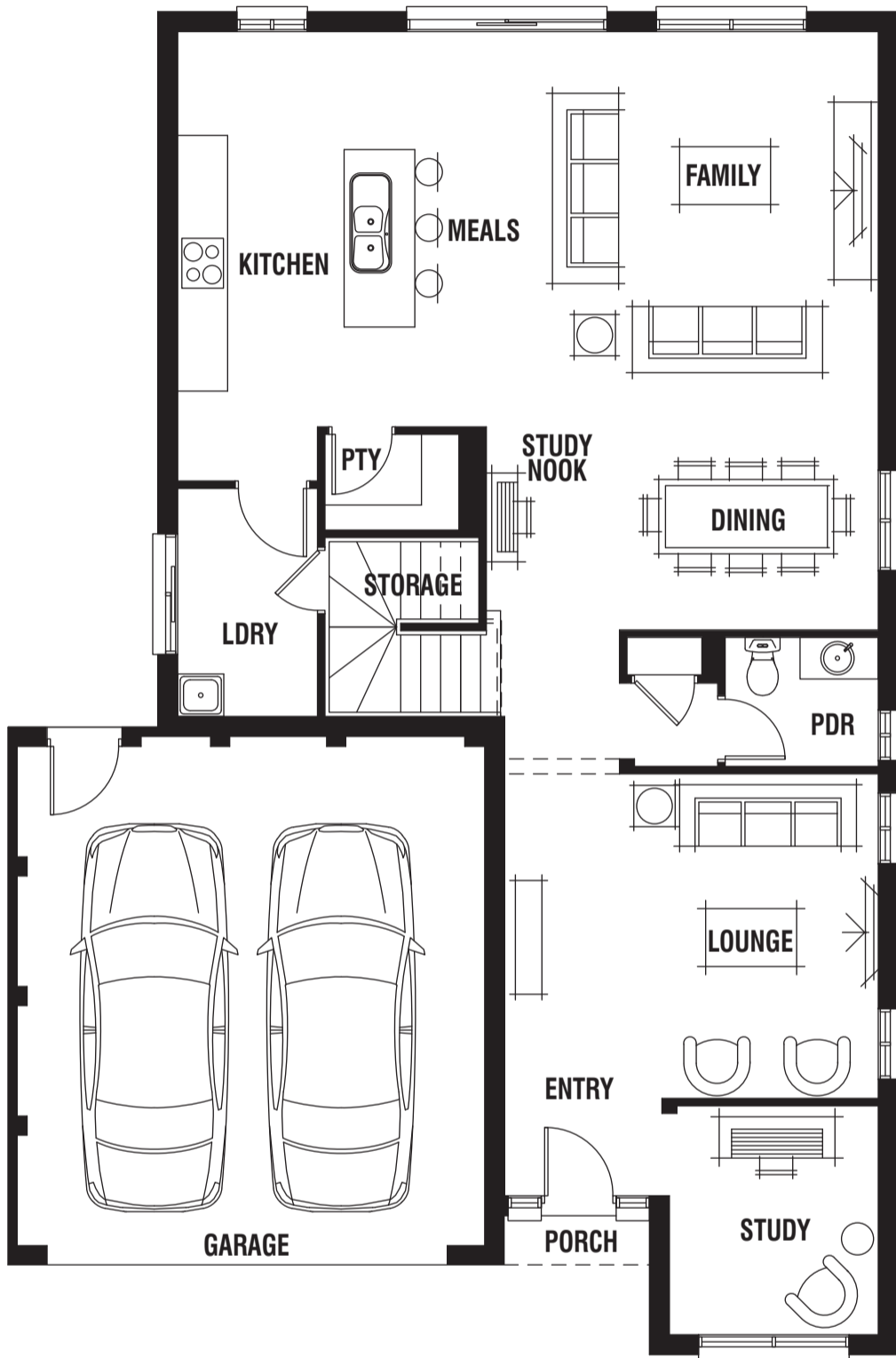
House (width x length): **10.7m x 16.14m**

DESIGNED TO SUIT

Land Min. Lot Width#: **12.5m+ | 41ft+**

Min. Lot Depth#: **28.0m+ | 98ft 10in+**

**STRICTLY LIMITED SITE STARTS**



### Room Sizes

Master Bedroom	4.5 x 4.0m	Dining	3.1 x 2.6m
Bedroom 2	3.0 x 3.0m	Lounge	3.1 x 3.9m
Bedroom 3	3.4 x 3.0m	Games	3.5 x 3.6m
Bedroom 4	3.3 x 3.0m	Study	2.5 x 2.8m
Family	4.7 x 4.6m		

### Specifications

Living Area	223.45m <sup>2</sup>	24.05sq
Garage	36.72m <sup>2</sup>	3.95sq
Porch	1.03m <sup>2</sup>	0.11sq*
<b>Total</b>	<b>261.20m<sup>2</sup></b>	<b>28.12sq*</b>

### Available Sizes

Charlton 28  
Charlton 33

### Design Options

- Alfresco Option
- Cinema Lounge Option
- Garage Access Option
- Grand Alfresco Option
- Guest Suite Option
- Master Ensuite Option

\* Sizes may vary slightly as per façade range. Floorplan based on the Challock façade – see façade pricelist for RRP.  
# Minimum Lot Sizes may vary due to Council requirements & estate guidelines. This work is exclusively owned by RSS Property Holdings and cannot be reproduced or copied either wholly or in part, in any form (graphic, electronic or mechanical, including photocopying and uploading to the internet) without the written permission of RSS Property Holdings. This document is for illustration purposes and should be used as a guide only. Illustrations are not to scale. Garage dimensions are external measurements only. Refer to actual working drawings.

PORTER DAVIS

ADVANTAGE

www.porterdavis.com.au