

THE MONTAGUE 19

STANDARD FLOORPLAN WITH RIVIERA FAÇADE

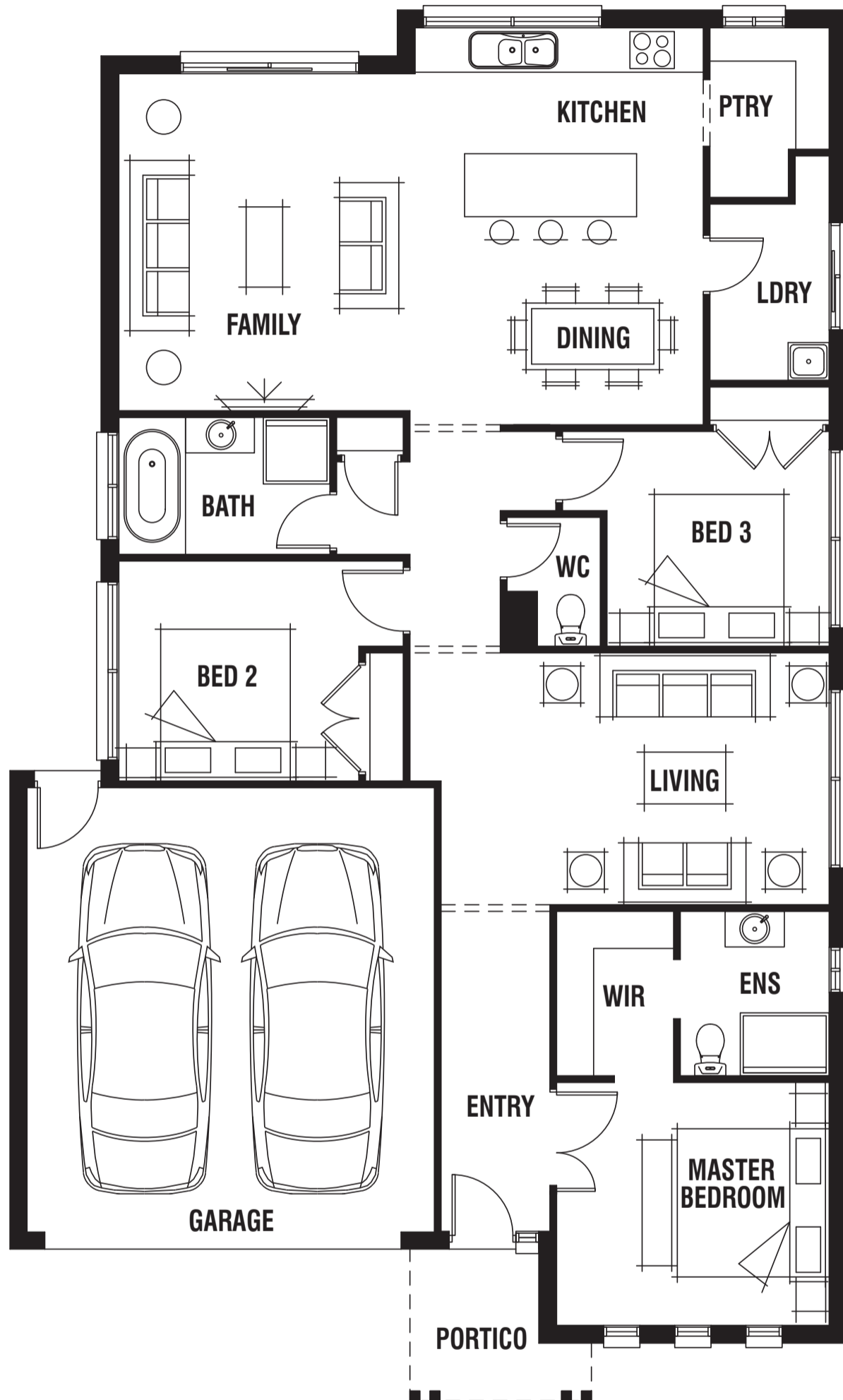
3 2 2 2

House (width x length): **11.3m** x **18.78m**

DESIGNED TO SUIT

Land Min. Lot Width#: **12.5m+** | **41ft+**

Min. Lot Depth#: **25.0m+** | **82ft+**



Room Sizes

Master Bedroom	3.3 x 3.7m	Family	3.9 x 4.6m
Bedroom 2	3.2 x 3.0m	Dining	2.7 x 2.8m
Bedroom 3	3.0 x 2.9m	Living	3.8 x 3.4m

Specifications

Living Area	143.24m ²	15.42sq
Garage	35.98m ²	3.87sq
Portico	4.12m ²	0.44sq*
Total	183.34m²	19.74sq*

Available Sizes

Montague 19 Montague 21

Design Options

- Alfresco Option
- Extended Kitchen Option
- 4th Bedroom Option
- Grand Alfresco Option

* Sizes may vary slightly as per façade range. Floorplan based on the Riviera façade – see façade pricelist for RRP. # Minimum Lot Sizes may vary due to Council requirements & estate guidelines. This work is exclusively owned by RSS Property Holdings and cannot be reproduced or copied either wholly or in part, in any form (graphic, electronic or mechanical, including photocopying and uploading to the internet) without the written permission of RSS Property Holdings. This document is for illustration purposes and should be used as a guide only. Illustrations are not to scale. Garage dimensions are external measurements only. Refer to actual working drawings.

PORTER DAVIS

ACCESS

www.porterdavis.com.au